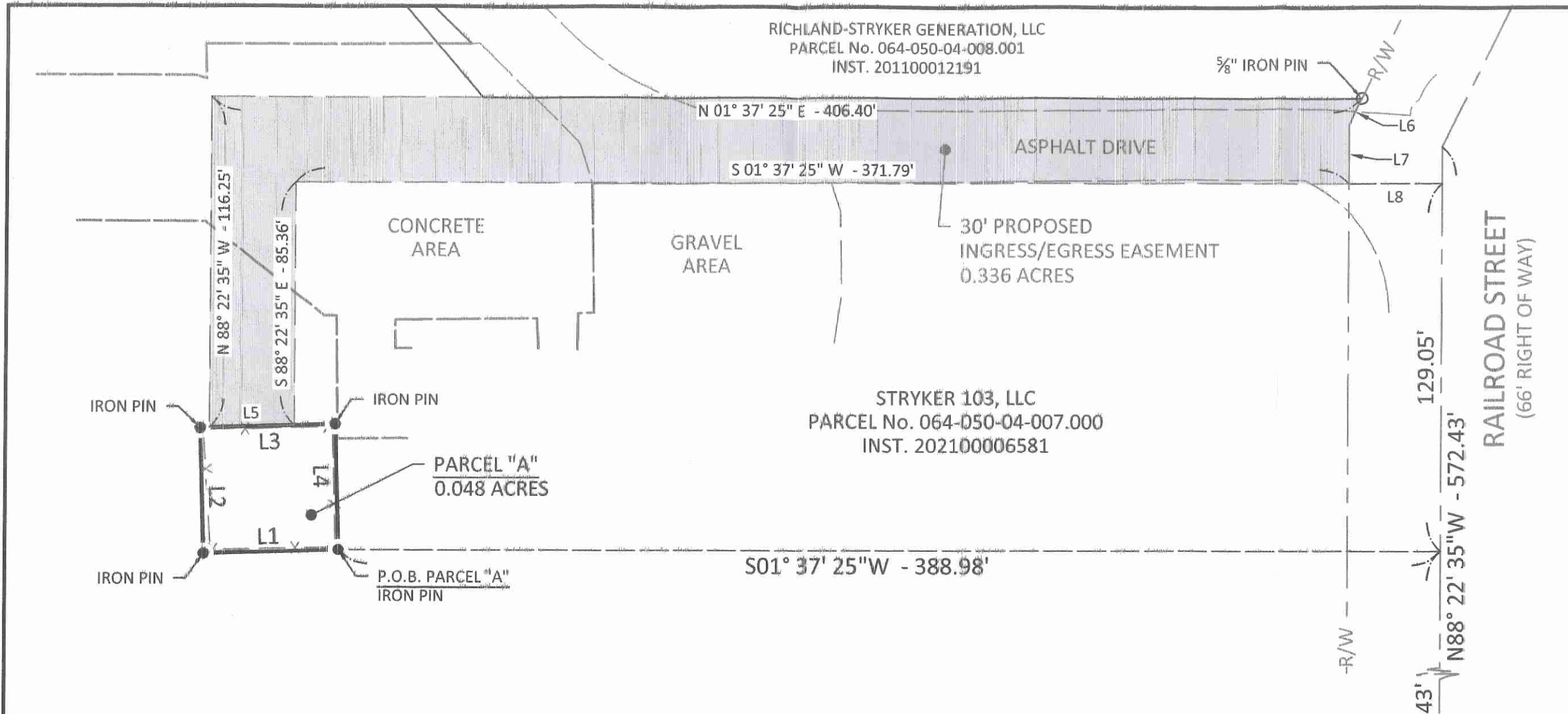


PLOTTED: Dec 06, 2022 - 10:57am
 DRAWING: M:\22003 (2022 DGL Houseon - Misc Surveys)\34 - Village of Stryker Water Tower Survey\SURVEY\Drawg\Stryker WT.dwg: 11x17



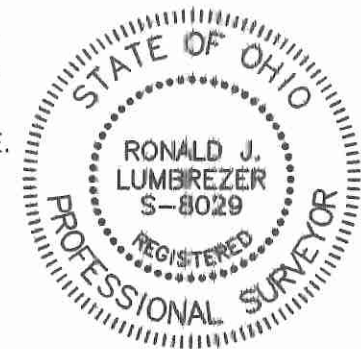
NOTE:
 IRON PINS SET ARE 5/8" DIAMETER X 30" LONG IRON PINS WITH CAP "DGL-RJL 8029"

BASIS OF BEARINGS:
 THE BEARINGS SHOWN HEREON ARE BASED ON AN ASSUMED BEARING AND ARE FOR THE SOLE PURPOSE OF SHOWING ANGULAR MEASUREMENT.

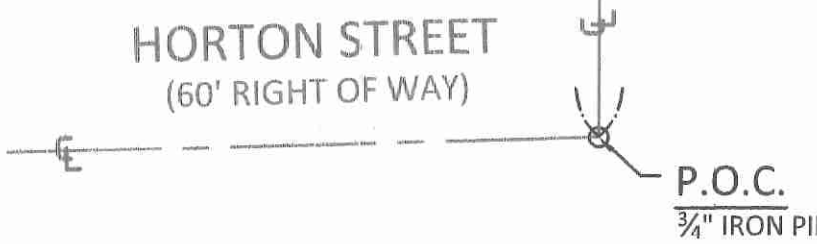
CERTIFICATION:
 I HEREBY CERTIFY THAT THIS SURVEY SHOWN ON THE ATTACHED PLAT WAS PREPARED FROM AN ON THE GROUND SURVEY MADE UNDER MY SUPERVISION AND THAT IT AND THE INFORMATION, COURSES AND DISTANCES AS SHOWN ARE CORRECT TO THE BEST OF MY KNOWLEDGE.

[Signature]
 R.J. LUMBREZER, P.S.
 OHIO PROFESSIONAL SURVEYOR NO. 8029

12/06/2022
 DATE



Line Table		
Line #	Direction	Length
L1	S 00° 04' 59" E	47.67'
L2	S 89° 55' 01" W	44.14'
L3	N 00° 04' 59" W	47.67'
L4	N 89° 55' 01" E	44.14'
L5	S 00° 04' 59" E	30.01'
L6	S 62° 11' 35" E	10.45'
L7	S 88° 22' 35" E	20.62'
L8	S 01° 37' 25" W	33.00'



- LEGEND**
- MONUMENT FOUND
 - MONUMENT SET
 - (C) CALCULATED DISTANCE
 - (M) MEASURED DISTANCE
 - (REC) RECORD DISTANCE
 - R/W RIGHT-OF-WAY
 - P.O.B. POINT OF BEGINNING
 - P.O.C. POINT OF COMMENCEMENT




NO.	REVISION	DATE
9		
8		
7		
6		
5		
4		
3		
2		
1		



DGL CONSULTING ENGINEERS, LLC
 3455 BRIARFIELD BLVD., SUITE E
 MAUMEE, OH 43537
 PHONE: 419.535.1015
 www.dgl-ttd.com

VILLAGE OF STRYKER
 PART OF THE SOUTH HALF OF SECTION 5,
 TOWN 6 NORTH, RANGE 4 EAST,
 IN THE VILLAGE OF STRYKER,
 WILLIAMS COUNTY, OHIO

SURVEY

FILE:	Stryker WT.dwg
JOB NO.:	22003-34
DRAWN BY:	KEY
ISSUED:	10/27/2022

1/1